



AUTOMATIC FEEDERS

STEFF 2044

Safety device for a safe and effective workpiece feeding on different types of traditional wood-working machines.

- Improves the safety: the operator does not have to put his hands close to the tool
- Improves the finish quality, thanks to the constant and even feed-rate
- Feed-rate can be easily selected to meet every specific working need
- Easily adjustable to suit different sizes of work piece

More than 400.000 machines manufactured, over sixty years' experience. Maggi is the only European manufacturer of power-feeding units, which are 100% Italian-made, and abiding by the highest quality standards, as a result of the "Lean" manufacturing process, also known as "Toyota System".

TECHNICAL FEATURES MODEL

Main features: N.4 fixed speeds (4-8-11-22 mt/min)

N.4 wheels (diam./ thickness 120x60 mm)

Motor power: 1 HP / 0,75 kW - 1.400/2.800 RPM

Cast aluminium housing, finished on high-precision machining centers

Steel-made gear cover

Eco-friendly, rust-resistant powder coating

Manufactured according to EC standards

STANDARD EQUIPMENT

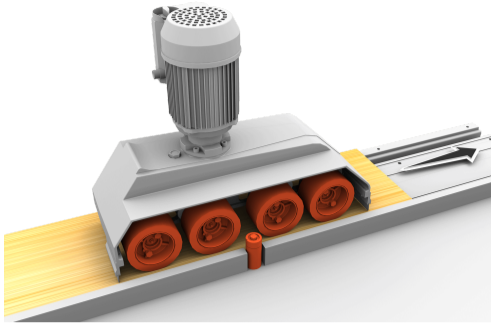
Cast aluminium housing and steel-made gear cover

1 HP motor with 3mt cable

50-Shore "Feeder Grip" rubber wheels

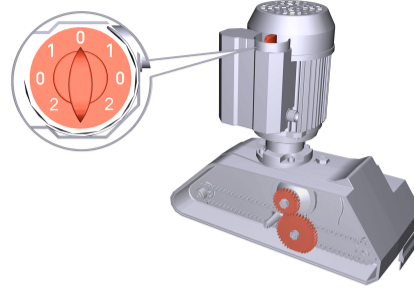
Package: recyclable cardboard box

MORE INFORMATION



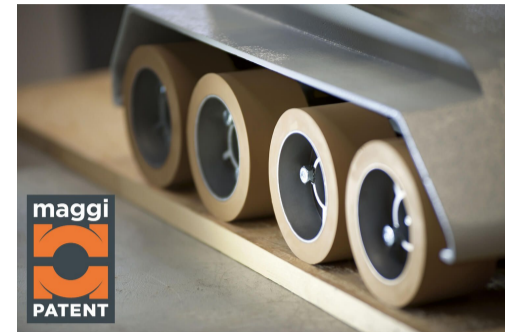
HIGH-QUALITY END PRODUCTS

4-wheel model: the ideal solution for the feeding of wooden rods and medium and/or large-size workpieces. Thanks to the two infeed-wheels and the two outfeed ones, the workpiece is constantly and evenly feded althrough the working process, thus remarkably improving the quality of the end products.



QUICK SET-UP

The speed selector allows a quick set-up of the 1st and the 2nd feed- rate and the quick change of the feeding direction back and forth; while swapping the internal gears You obtain the 4 speeds.



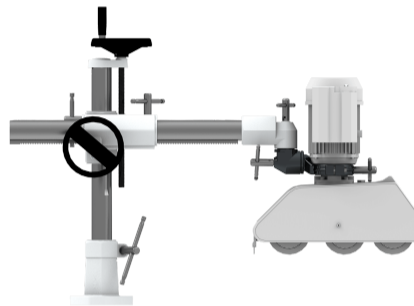
PERFECT GRIP

50-Shore wheels made of patented "Feeder Grip" rubber, provide the longest durability and the highest grip on the workingpiece. 4 wheels ensure even more grip on the panels, althrough the feeding process.



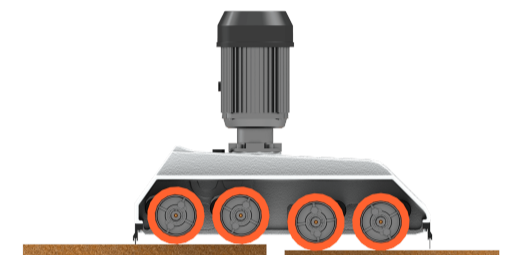
SAFETY AS A CORE VALUE

A power-feeder improves the safety as it feeds the workpiece close to the tool, while operator's hands are kept at a distance. Its effectiveness depends on specific design and manufacturing criteria. Maggi feeders are the only ones designed and manufactured in Italy and abiding by all EU safety norms.



UNIVERSAL STAND

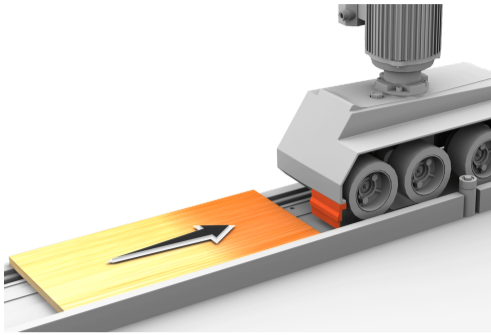
For easy positioning and adjusting of the feeding unit on the machine tool. It is easy to fix, stable and strong: foot, cross-shaped piece, pipe, joint and collar are made of cast-iron and the two columns are made of rectified steel of considerable thickness. Handles made of steel and adjusting wheels allow a quick and accurate positioning.



HIGH ADAPTABILITY

The 20 mm wheel suspension, with calibrated spings, allows the constand and even feeding of workpieces with different thicknesses without any additional set-up.

MORE INFORMATION



SAFETY BRUSHES

Additional safety devices, both sides of the feeding unit.



SAFE STAND

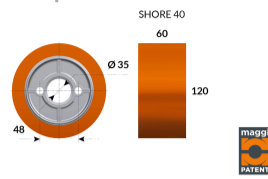
Equipped with safety restraint devices (SPS - System) preventing accidental unloads, to abide by EC safety norms.

DATA SHEET

N. of speeds back and forth	4
Fixed speeds	4 - 8 - 11 - 22 mt/min
N. of wheels	4
Wheel diameter and thickness	120 x 60 mm
Motor	1 HP / 0,75 KW RPM 1400 / 2800
Wheel suspension	20 mm
Distance between wheels	133 mm - 143 mm - 145 mm
Distance between first and last wheel	421 mm
Overall dimensions and net weight of the feeding unit	615 x 220 x 490 mm - 34 Kg
Overall dimensions and net weight of the stand	540 x 910 mm - 35 Kg
Package dimensions and gross weight (feeding unit)	670 x 570 x 330 mm - 36 Kg
Package dimensions and gross weight (stand)	800 x 330 x 330 mm - 37 Kg

ACCESSORIES

Perfect grip on panels - Smooth surface



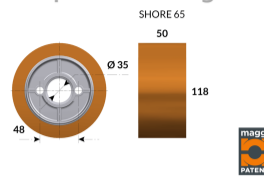
Patented Feeder Grip 363

The special rubber covering, patented and guaranteed by Maggi: 60-year leading manufacturer, ensures the highest grip on the workingpiece.

Patented "Feeder Grip 363" rubber wheel 120x 60 mm diam. / 40 shore

CODICE: 30102015

Perfect grip on panels - Rough surface



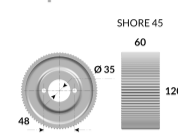
Rubber wheel

The special rubber covering, patented and guaranteed by Maggi: 60-year leading manufacturer, ensures the highest grip on the workingpiece

Rubber wheel 118x 50 mm diam. / 65 shore

CODICE: 30100014

Perfect grip on panels - Unfinished surface



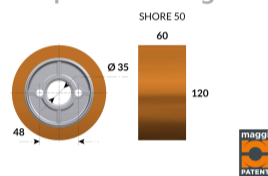
Wheel made of steel

Guaranteed highest grip, specific for the feeding of panels with an unfinished surface

Wheel made of steel 120x60 mm

CODICE: 40102015

Perfect grip on panels - Rough surface



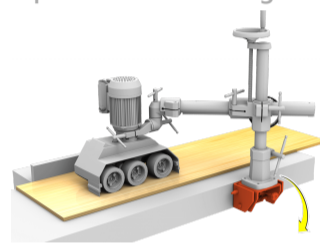
Patented Feeder Grip 758

The special rubber covering, patented and guaranteed by Maggi: 60-year leading manufacturer, ensures the highest grip on the workingpiece

Patented "Feeder Grip 758" rubber wheel 120x 60 mm diam. / 50 shore

CODICE: 30100015

Save space on the working table

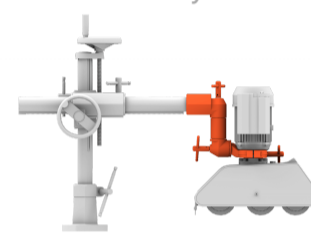


Tipper clamp 96

It permits to fix the base of the universal stand sideways of the working table and to tilt the power-feeding unit quickly to free space for maintenance and/or other adjusting operations

CODICE: 22100151

Increase the versatility



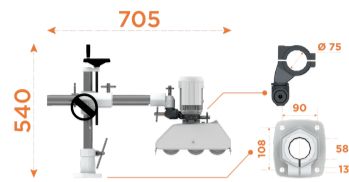
Pipe-joint-collar group with extension

It allows to position the power-feeding unit at a greater distance from the tool or the working table

CODICE: 23201012

ACCESSORIES

Standard stand



Standard universal stand with 705 mm horizontal and 540 mm vertical column

Standard universal stand with 705 mm horizontal and 540 mm vertical column

It is the essential complement to the power-feeding unit as it allows its positioning and fine adjustment on the machine tool

CODICE: 13200700

Special stands



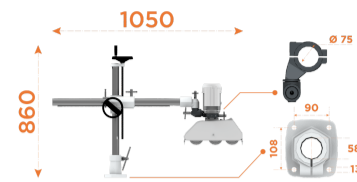
Universal stand with 1.050 mm horizontal and 540 mm vertical column

Universal stand with 1.050 mm horizontal and 540 mm vertical column

It is the essential complement to the power-feeding unit as it allows its positioning and fine adjustment on the machine tool. This type of stand has a longer horizontal tube for a greater versatility

CODICE: 13300700

Special stands



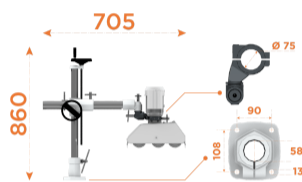
"V" universal stand with 1.050 mm horizontal and 860 mm vertical column

"V" universal stand with 1.050 mm horizontal and 860 mm vertical column

It is the essential complement to the power-feeding unit as it allows its positioning and fine adjustment on the machine tool. This type of stand has a longer horizontal and vertical tube for an even greater versatility

CODICE: 13500700

Special stands



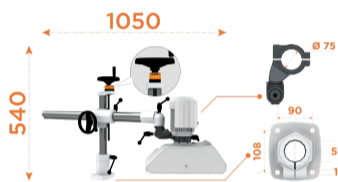
"V-M" universal stand with 705 mm horizontal and 860 mm vertical column

"V-M" universal stand with 705 mm horizontal and 860 mm vertical column

It is the essential complement to the power-feeding unit as it allows its positioning and fine adjustment on the machine tool. This type of stand has a longer vertical tube for a greater versatility

CODICE: 13099999

Special stands



PLUS universal stand with 1050 horizontal and 540 mm vertical column

"Plus" universal stand with 1050 horizontal and 540 mm vertical column

QUICK, EASY AND ACCURATE POSITIONING thanks to the ergonomic handles and the numeric counter for the height adjustment

CODICE: 13400600

Special voltages

Single-phase Motor

To have the machine working in small handcraft shops having an electric system running on 220 VIts

CODICE:

ACCESSORIES

Special voltages

"CSA" standards

Electrical standards abiding by the Canadian wiring regulations

CODICE:
